

SUSTAINABLE, CLEAN **RENEWABLE ENERGY STORAGE**



SUN XTENDER® PROVIDING SAFE, RELIABLE  
AND LONG LASTING POWER SINCE 1987



## **VRLA-AGM Deep Cycle Batteries** *for Off-Grid and Grid-Tied Systems*

**Power when you need it!** [SUNXTENDER.COM](http://SUNXTENDER.COM)

*...the heart of your renewable energy system™*  
**SUN XTENDER**  
MANUFACTURED BY CONCORDE BATTERY CORPORATION

# DEEP CYCLE POWER FOR RENEWABLE ENERGY SYSTEMS – SOLAR, PV AND WIND, OFF GRID & GRID TIED SYSTEMS



## Sun Xtender® Advantages:

LONG SERVICE LIFE | LONG FLOAT LIFE  
RELIABLE OPERATION AT TEMPERATURE EXTREMES

Sun Xtender's AGM design is the original Absorbent Glass Mat battery technology adopted by the U.S. Military.

Deep cycle unique high density plate technology provides superior reliability, power & extended cycle life.

VRLA-AGM: Valve Regulated Lead Acid Battery with Absorbent Glass Mat. The sealed, maintenance free design eliminates the requirement to monitor and replenish water levels.

Low impedance design with excellent charge acceptance. There is no current limit with controlled voltage charging. Recharge is quick and complete in a minimum of time.

Utilizing pure lead-calcium grids, the plates are thicker than the industry standard for longer cycle life, increased reliability and power.

Sun Xtender's proprietary Polyguard® protection is a microporous polyethylene separator used around the positive plate & AGM to prevent shorting from shock and vibration. Sun Xtender is the only manufacturer providing this added layer of protection.

Shockproof high impact reinforced case restrains from bulging.

Copper alloy corrosion free connections allow for maximum conductivity.

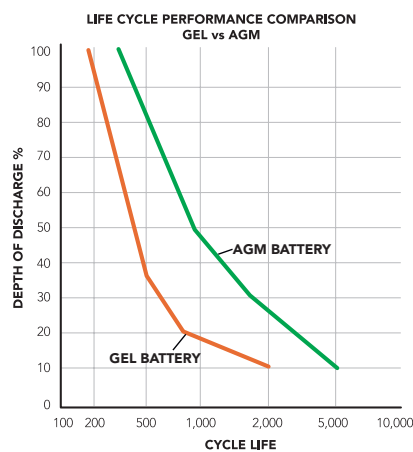
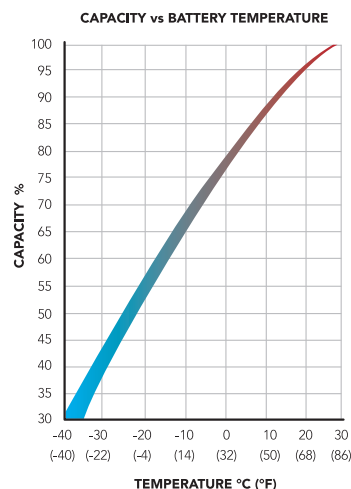
Shipped fully charged and ready to install.

Sun Xtender Batteries ship Hazmat Exempt.

## Sun Xtender VRLA-AGM vs. Gel

Sun Xtender's high density unique plate design with low impedance, excellent charge acceptance and retention is superior to gel batteries. Sun Xtender's robust plates are wrapped in electrolyte absorbed AGM and packed close together. Recharging gel batteries takes longer and is impeded by the wide spaces left between the plates so the battery can be filled with thick gelled electrolyte.

The gelled electrolyte is prone to solid/liquid separation at extreme temperatures and eventually during operation. This separation causes the electrolyte to lose contact with the plates, affecting battery performance and shortening battery life.



### M8 Threaded Insert Standard Terminals

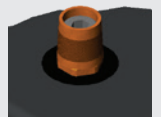
All batteries with a "T" at the end of the part number incorporate M8 (copper alloy) threaded insert terminals except PVX-340T (M6) & PVX-420T (M6).

All batteries are supplied with silicon bronze bolts, nuts, and washers required for installation.



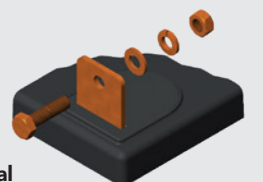
### A SAE Automotive Post

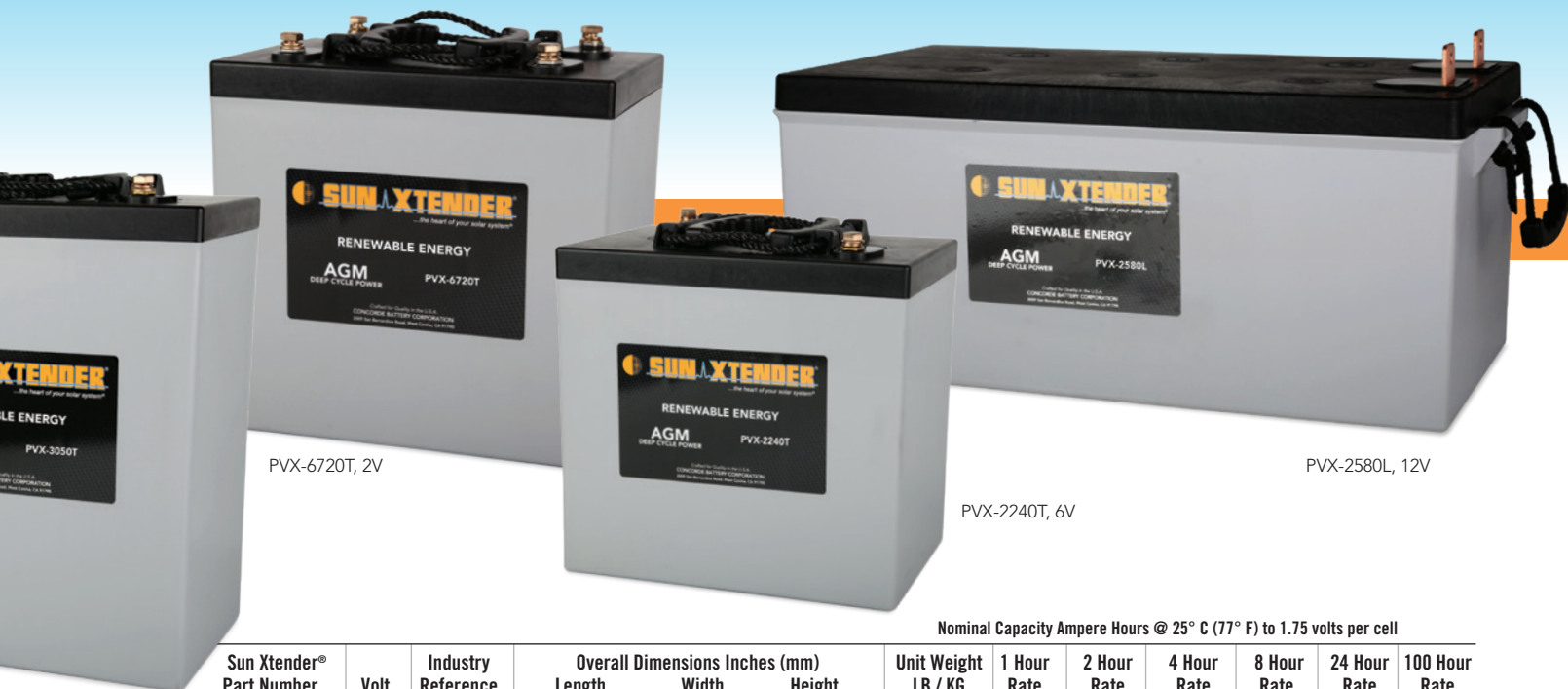
Optional (copper alloy) terminal installed at the factory. Most batteries are available with an optional factory installed "A" SAE automotive type terminal by adding the appropriate suffix to the end of the part number. For example, order PVX-1040TA instead of PVX-1040T.



### L Blade Terminal

Heavy duty solid copper with silicon bronze bolts, washers, and nuts. PVX-2120L & PVX-2580L are "L" Blade (solid copper) terminals.





Nominal Capacity Ampere Hours @ 25° C (77° F) to 1.75 volts per cell

Sun Xtender® Part Number	Volt	Industry Reference	Overall Dimensions Inches (mm)			Unit Weight LB / KG	1 Hour Rate	2 Hour Rate	4 Hour Rate	8 Hour Rate	24 Hour Rate	100 Hour Rate
			Length	Width	Height							
PVX-340T	12	U1	7.71 (196)	5.18 (132)	6.89 (175)	25/11.4	21	27	28	30	34	37
PVX-420T	12	U1 Tall	7.71 (196)	5.18 (132)	8.05 (204)	30/13.6	26	33	34	36	42	44
PVX-490T	12	22NF	8.99 (228)	5.45 (138)	8.72 (221)	36/16.4	31	39	40	43	49	54
PVX-560T	12	22NF	8.99 (228)	5.45 (138)	8.72 (221)	40/18.2	36	45	46	49	56	62
PVX-690T	12	24	10.22 (260)	6.60 (168)	8.75 (222)	51/23.2	42	53	55	60	69	78
PVX-840T	12	24	10.22 (260)	6.60 (168)	8.75 (222)	57/25.9	52	66	68	74	84	96
PVX-890T	12	31	12.93 (328)	6.75 (172)	8.79 (223)	62/28.2	55	70	72	79	89	100
PVX-1040T	12	27	12.01 (305)	6.60 (168)	8.75 (222)	63/28.6	65	82	85	93	104	118
PVX-1080T	12	31	12.93 (328)	6.75 (172)	8.79 (223)	65/29.5	68	86	88	97	108	124
PVX-1180T	12	31	12.93 (328)	6.75 (171)	8.79 (223)	72/32.7	72	92	95	104	118	135
PVX-1290T	12	31	12.93 (328)	6.75 (171)	8.79 (223)	75/34	79	100	103	113	129	146
PVX-1530T	12	30H Tall	13.46 (342)	6.77 (172)	11.77 (299)	91/41.3	95	120	124	136	153	176
PVX-2120L	12	4D	20.76 (527)	8.70 (221)	9.77 (248)	127/57.6	136	172	176	194	212	250
PVX-2580L	12	8D	20.76 (527)	10.89 (277)	9.77 (248)	159/72.1	165	209	214	236	258	300
PVX-1030T	6	24	10.21 (259)	6.60 (168)	8.92 (227)	42/19.1	65	82	85	93	103	118
PVX-1380T	6	24	10.21 (259)	6.60 (168)	8.92 (227)	51/23.2	84	106	110	120	138	155
PVX-2240T	6	GC2	10.28 (261)	7.06 (179)	9.92 (252)	67/30.4	143	180	185	204	224	260
PVX-2560T	6	31	12.90 (328)	6.75 (171)	8.96 (228)	75/34	158	200	206	226	256	292
PVX-3050T	6	GC2 Tall	10.28 (261)	7.06 (179)	12.94 (329)	91/41.3	190	245	270	280	305	354
PVX-4050HT	6	L-16	11.64 (296)	6.95 (177)	15.73 (399)	120/54.4	266	345	360	376	405	443
PVX-5340T <sup>1</sup>	2	31	12.90 (328)	6.75 (171)	8.96 (228)	64/29.0	330	420	432	474	534	604
PVX-6480T <sup>1</sup>	2	31	12.90 (328)	6.75 (171)	8.96 (228)	67/30.5	408	516	528	582	648	746
PVX-6720T <sup>1</sup>	2	GC2	10.28 (261)	7.06 (179)	9.92 (252)	70/31.8	429	540	555	612	672	780
PVX-7680T <sup>1</sup>	2	31	12.90 (328)	6.75 (171)	8.96 (228)	75/34	474	600	618	678	768	876
PVX-9150T <sup>1</sup>	2	GC2 Tall	10.28 (261)	7.06 (179)	12.94 (329)	94/42.6	570	735	810	840	915	1062
PVX-12150HT <sup>1</sup>	2	L-16	11.64 (296)	6.95 (177)	15.73 (399)	124/56.2	798	1035	1080	1128	1215	1329

<sup>1</sup> 4 terminal battery

For full specifications, refer to our website, [www.sunxtender.com](http://www.sunxtender.com)

Specifications subject to change without notice. Never install batteries in an airtight or sealed enclosure. Insure installation is adequately ventilated.

The item or technical data contained herein has been reviewed and approved for general release on the basis that it contains no export-controlled information.





## VRLA-AGM Deep Cycle Power for Off Grid & Grid Tied Systems – Back Up & Stand Alone

Sun Xtender pioneered renewable energy storage batteries for Off Grid & Grid Tied systems

Continuously developing battery technology to meet advancing renewable energy needs

Deep Cycle unique high density plate and grid design with PolyGuard® protection for superior reliability, power & extended cycle life

Provides reliable energy to off grid systems and grid tied back up power:

- Communication towers
- Pumping stations
- Construction signs
- Off Grid residential or businesses
- Grid Tied residential or businesses
- Remote electrification

All Sun Xtender Batteries ship Hazmat Exempt by land, sea & air

Sun Xtender is an Underwriters Laboratories Registered Component



Sun Xtender Batteries are 100% Recyclable, keeping Earth a beautiful place

Sun Xtender® Batteries are manufactured by Concorde Battery Corporation under an ISO 9001 + AS9100 Quality Management System. Concorde manufactures batteries qualifying to Mil-Spec Standards MIL-B-8565 & MIL-PRF-8565.